



# Cybersecurity Strategy

*Tailored Multi-Layered Cyber Defense Roadmap to Secure Your Business Today and in the Future*

## What is Cybersecurity Strategy service?

Domain experts with years of nation-state-grade experience develop a defense plan and an overall cybersecurity strategic roadmap to make every part of the business more resilient to cyber threats while at the same time encouraging flexibility, growth, and productivity. This framework outlines the organization's current cyber risk landscape and future business requirements so that the company's security program can scale with business growth, technology adoption, and emerging threats while successfully mitigating risks.

## How does Cybersecurity Strategy service work for me?

Initially, we begin with a **Holistic Risk Assessment** of the entire organization, which includes **Business Impact Analysis** and **Threat Modeling**. The assessment speeds up the program and allows us to map the vulnerabilities that are most likely to be exploited in the event of an attack and apply the business context: *i.e.*, understanding the business ramifications of attacks on different assets and parts of the organization to ensure the findings that carry the highest business risk are given maximum attention by the security team.

We then move on to building the organization's **Cyber Defense Matrix**, which among other benefits, provides a high-level overview of the entire cybersecurity environment.

In the last step, we provide the **strategic cyber defense plan**, which includes a **tailored multi-year roadmap**. This proactive defense program is designed to cope with evolving multi-staged attacks. It will consist of advanced and sensitive detection elements, multi-faceted preventative countermeasures, intelligence insights, well-defined response programs, deceptive techniques, and more. This plan will be invaluable to business continuity and productivity.

## Compliance readiness

This service includes ensuring the company is ready for compliance auditing.

1. Comprehensive plan - tailored to the organization
2. Implementation - we work together with the company's team
3. Test and reassess compliance - quality assurance, ensuring the company is ready.

## WHAT SHOULD YOU EXPECT?

- **Strategy roadmap - productive, concise, and prioritized, quickly updated with changing threats to meet current and future needs.**
- **Business impact analysis**
- **Threat modeling**
- **Risk assessment**
- **Cyber defense matrix**
- **Mapping company's current threat landscape and security posture.**
- **Implementation of governance and compliance.**
- **Zero overhead for clients, fully managed service.**
- **Policy outline adapted to unique company business needs, priorities, and risk appetite.**
- **Implementing effective risk controls.**
- **Clear prioritization of security threats that need to be handled immediately vs. items that do not pose an immediate risk.**
- **Straight-forward remediation and mitigation tactics and workflows.**

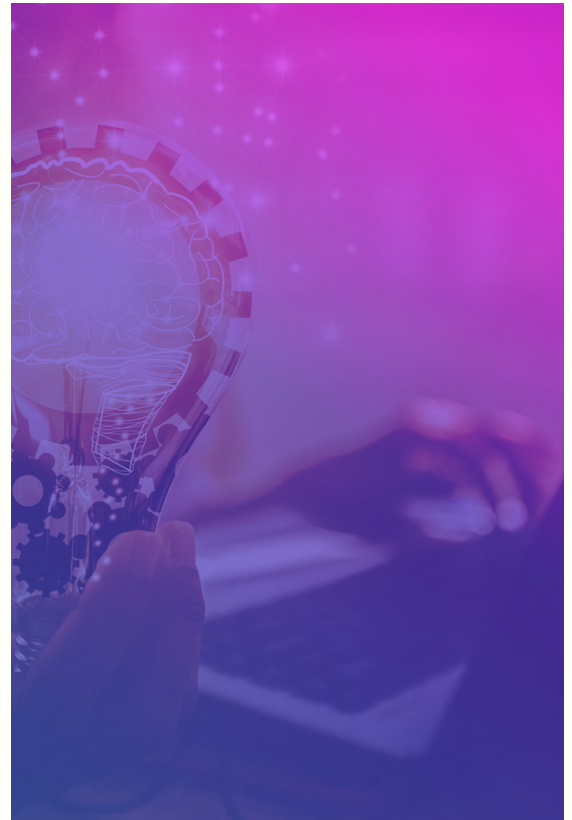


## How can enterprises keep up with today's cyber threats? By getting ahead of them.

In recent years, we have experienced a quantum leap in cyber offenders' tactics, techniques, and sophistication. This is partly because cyber offenders now have access to powerful cyber-attack weapons that were once the possession of nation-states and are now easily accessible through the darknet. It is as easy to purchase a malware product off the darknet as it is to shop for a toothbrush.

Due to the intensive commercial collaboration amongst offenders, this thriving market has caused the rapid emergence of cyber incidents, leaving organizations exposed and liable for violations. As such, cybersecurity has become a boardroom-level issue. Organizations need a proactive cyber defense program that will scale and evolve quickly, along with the rapid changes in the cyber threat landscape.

This service will provide that program (without the overhead) and will quickly advance and mature the organization's cyber security posture. HolistiCyber's nation-state-grade expertise offers organizations a resilient and sustainable program to improve security controls and preemptive countermeasures for new and dynamic cyber threats.



### Cybersecurity Strategy Service - Baseline



#### Why HolistiCyber?



- 1. Nation-state-grade expertise** - our staff of white-hat security experts is composed of former military and government offensive practitioners who can examine the attack surface from the vantage point of the attacker and not only from the company's vantage point. We have a solid grasp of the sophisticated tooling available to today's attackers and access to those attack tools.
- 2. Holistic approach** - we tie compliance, remediation, and mitigation solutions to each company's unique business objectives and workflows. Security should complement productivity and growth and avoid hindering them.

*"HolistiCyber's team created an impeccable defense plan and helped to establish our cyber security policies and strategies. Now we have a solid plan and specific priorities for our investments and assets based on the impact that attacks would have on every piece of the business. Our budget is better focused on the critical priorities."*  
~CISO, entertainment & Media Enterprise, USA